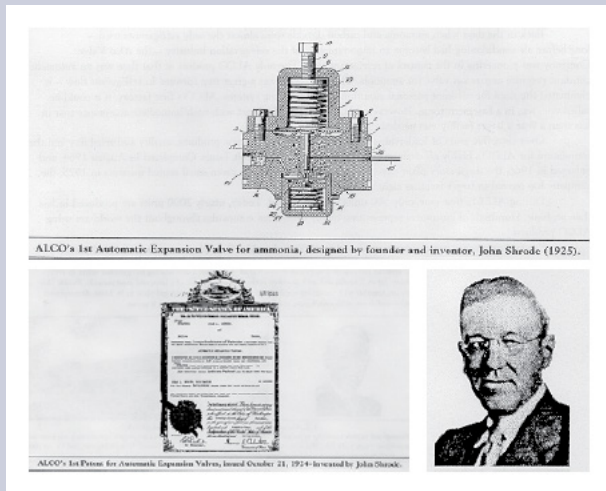


# A2L – Ready controls for commercial refrigeration applications

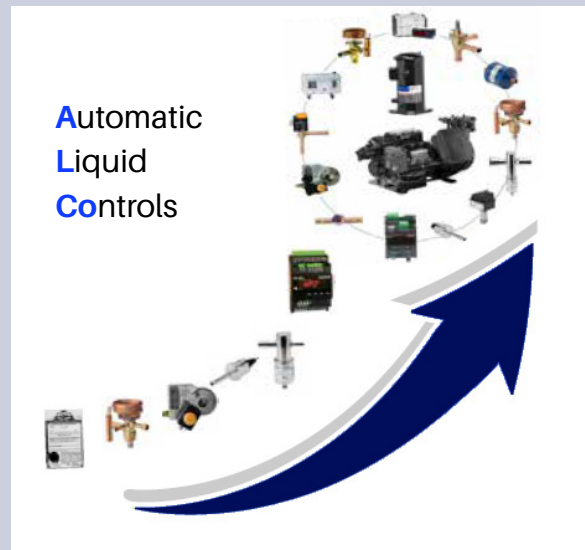
The F-gas regulation strives to reduce direct and indirect global greenhouse gas emissions and has set deadlines by which OEMs and end users have to lower the GWP of their refrigeration systems.

Copeland has developed a new series of flow controls for a variety of refrigerants to support this transition, such as CO2(R744), propane (R290) or alternatives, like A2L refrigerants.

These were optimized internally and externally for F-Gas compliant low GWP A2L refrigerants that, combined with the compressors and electronics, create the most reliable Copeland™ solutions.



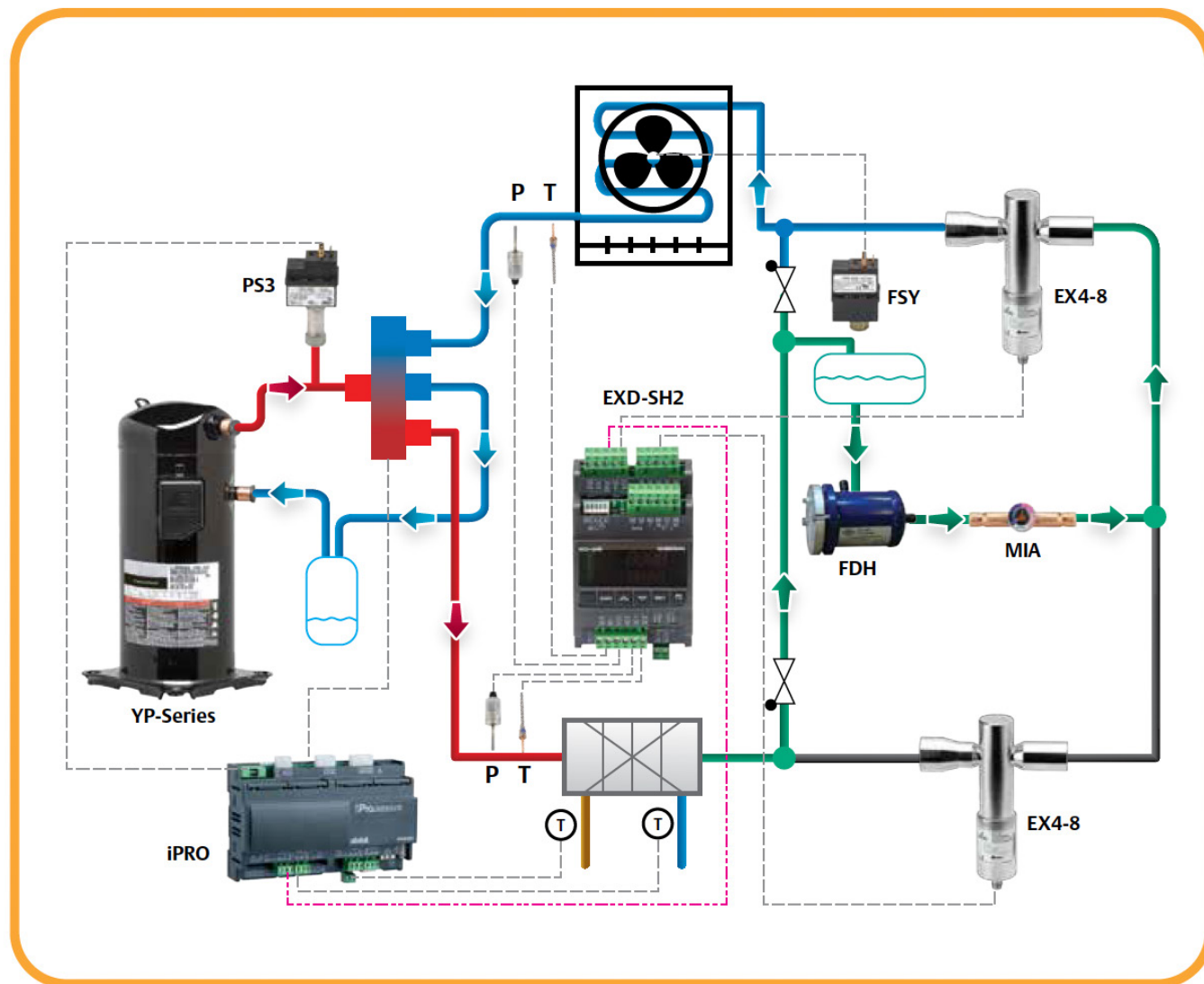
The world's first automatic expansion valve for use in refrigeration systems in 1925.



## *The key products include:*

- Electrical Control Valves
- Electronic Controllers and Sensors
- Thermo™-Expansion Valves
- Solenoid Valves
- Mechanical Pressure Regulators
- Oil Management
- Components
- Pressure Controls
- System Protectors and Moisture
- Ball Valves

## Full solution at a glance



For more details, the Control Navigator selection tool is available on the Copeland website.  
Contact your local Copeland representatives in case of any further questions or if you need support.

For more details, see [www.copeland.com](http://www.copeland.com).

Copeland Europe GmbH - European Headquarters - Pascalstrasse 65 - 52076 Aachen, Germany  
Tel. +49 (0) 2408 929 0 - Fax: +49 (0) 2408 929 570 - Internet: <https://www.copeland.com/en-gb>